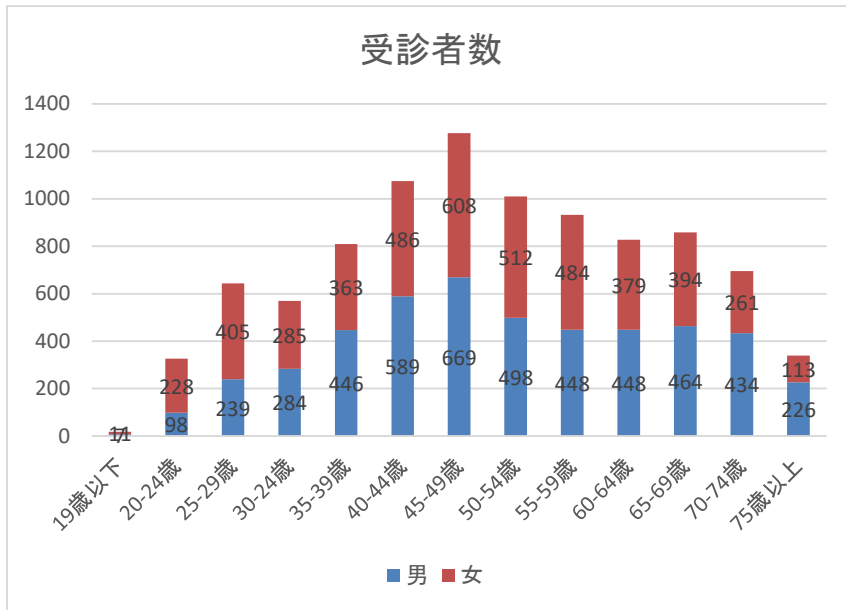


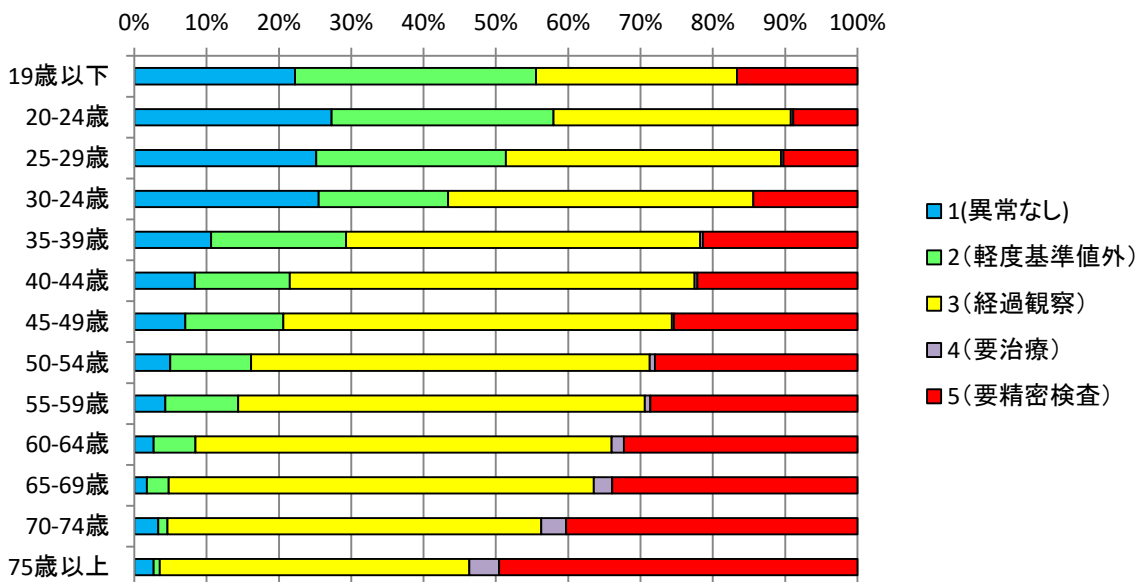
平成30年度 報告

当施設でのドック受診者数



	男	女	合計
19歳以下	7	11	18
20-24歳	98	228	326
25-29歳	239	405	644
30-34歳	284	285	569
35-39歳	446	363	809
40-44歳	589	486	1075
45-49歳	669	608	1277
50-54歳	498	512	1010
55-59歳	448	484	932
60-64歳	448	379	827
65-69歳	464	394	858
70-74歳	434	261	695
75歳以上	226	113	339
合計	4,850	4,529	9,379

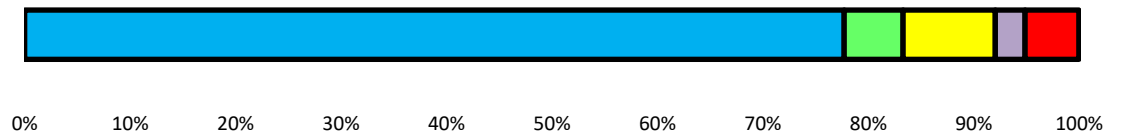
判定結果 年齢別



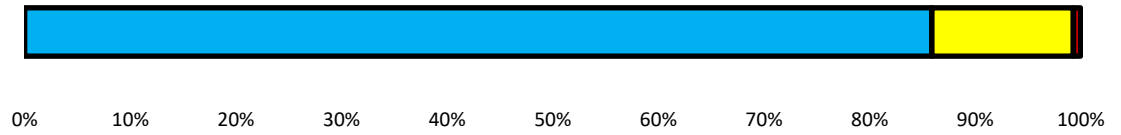
項目別判定グラフ

1(異常なし) 2(軽度基準値外) 3(経過観察) 4(要治療) 5(要精密検査)

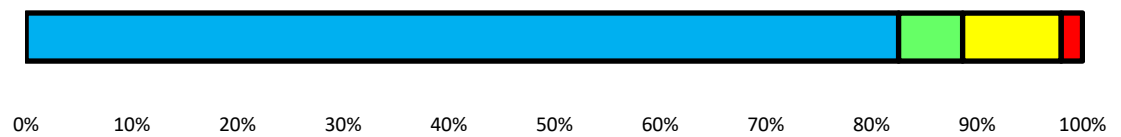
①眼科



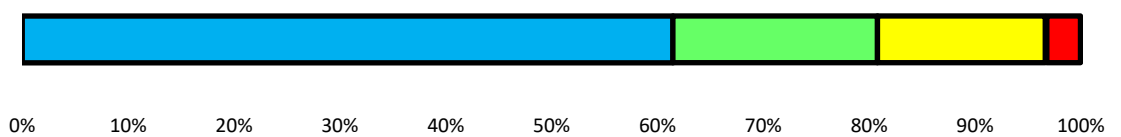
②聴力



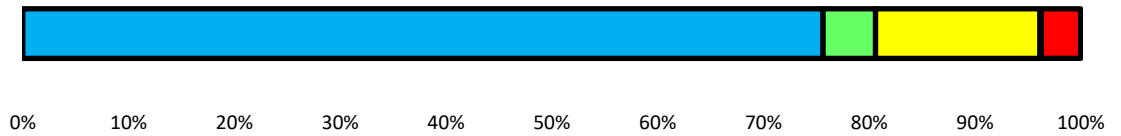
③血圧



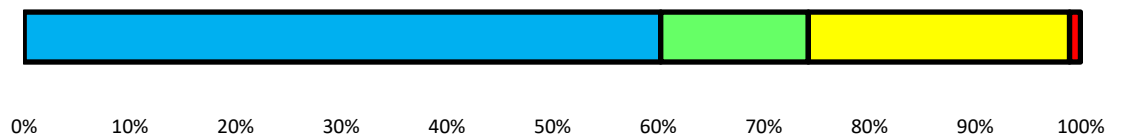
④末梢血液一般



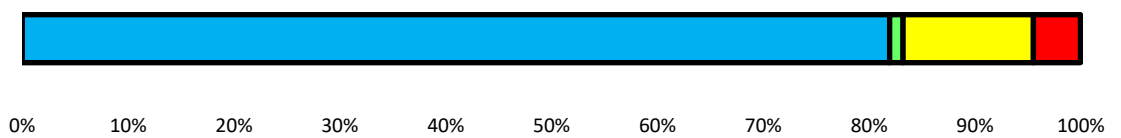
⑤肝機能



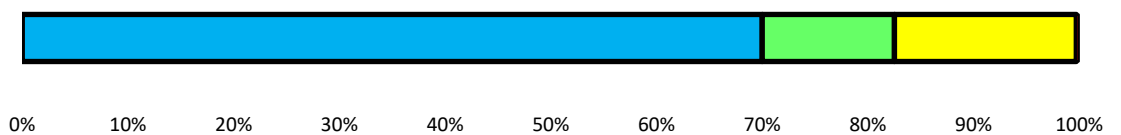
⑥脂質



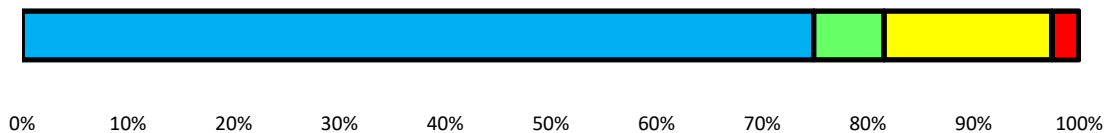
⑦代謝系



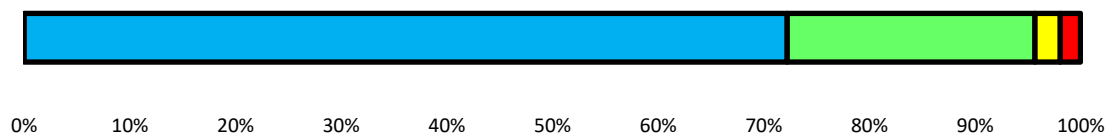
⑧腎・尿路



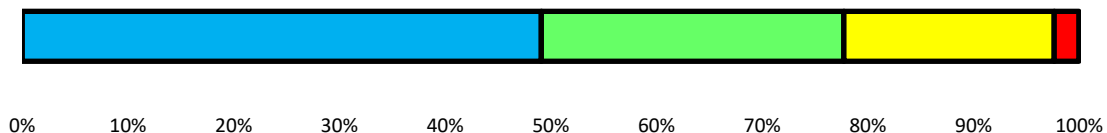
⑨心電図検査



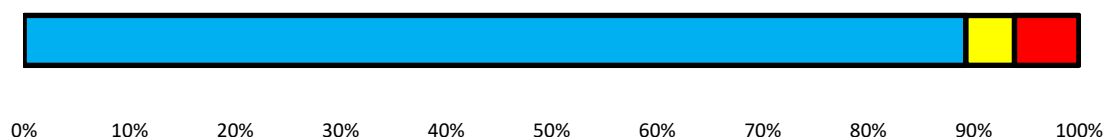
⑩胸部X線検査



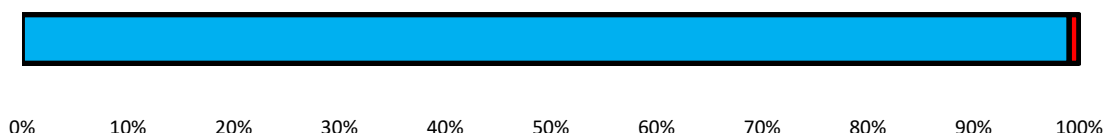
⑪胃部X線検査



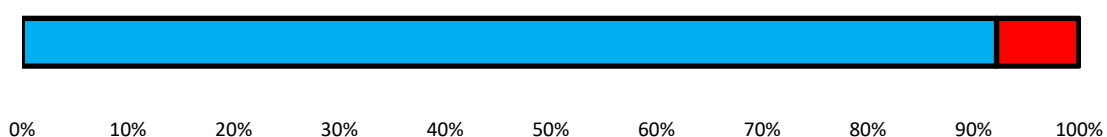
⑫大腸癌検査(便潜血反応)



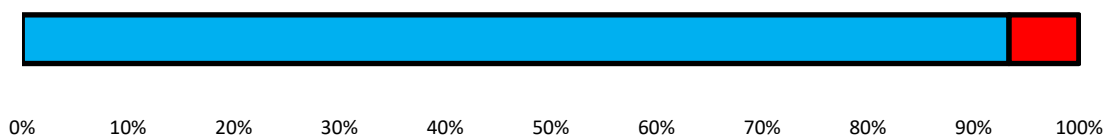
⑬子宮頸がん検査



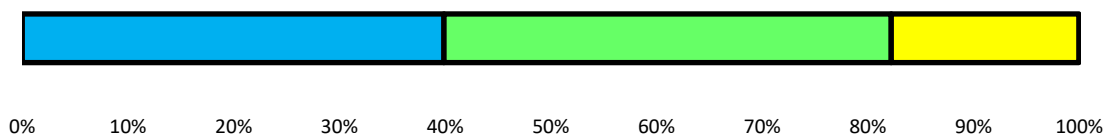
⑭乳がん検査



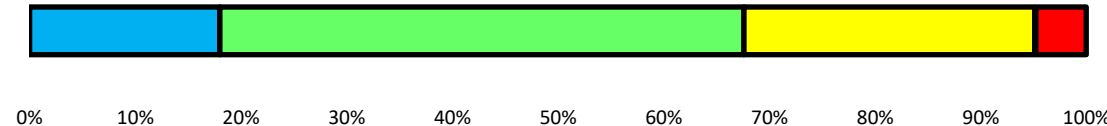
⑮前立腺癌検査



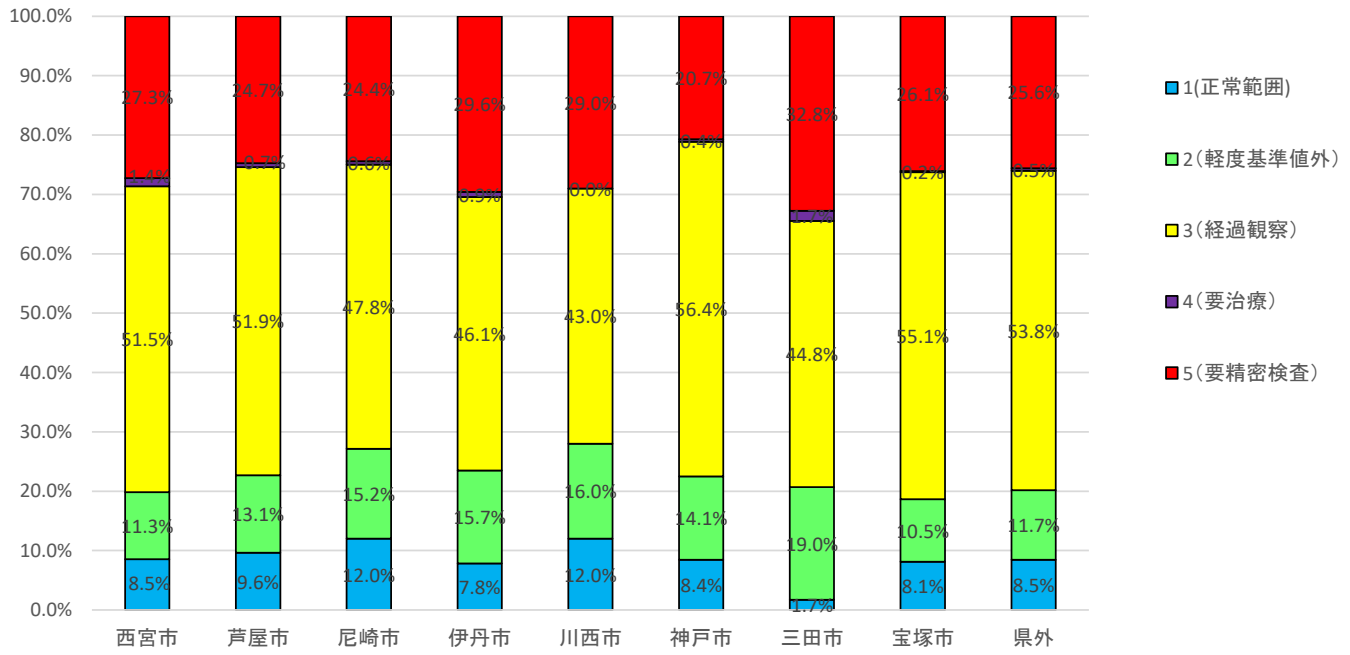
⑯骨粗鬆症検査



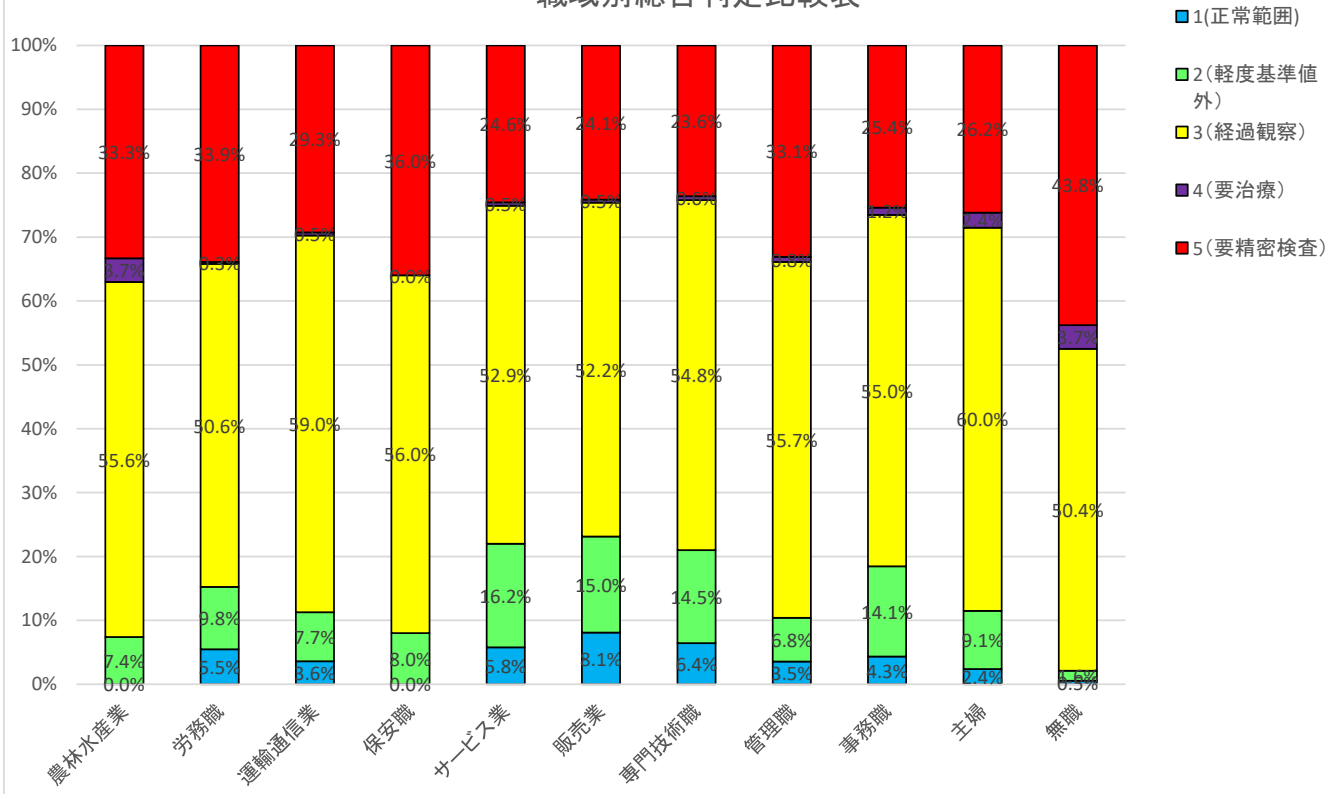
⑰腹部超音波検査



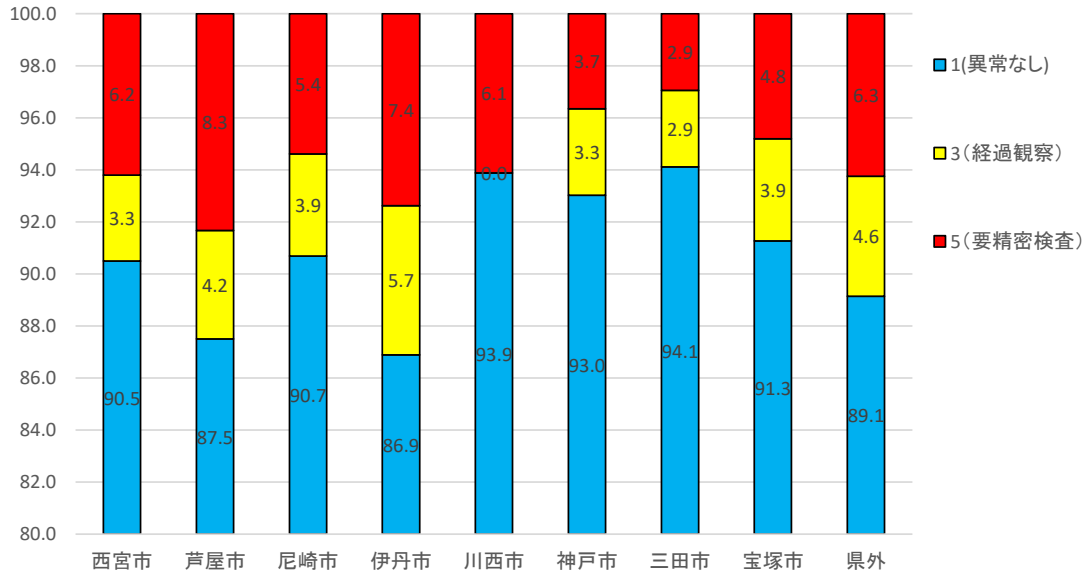
他市との総合判定比較



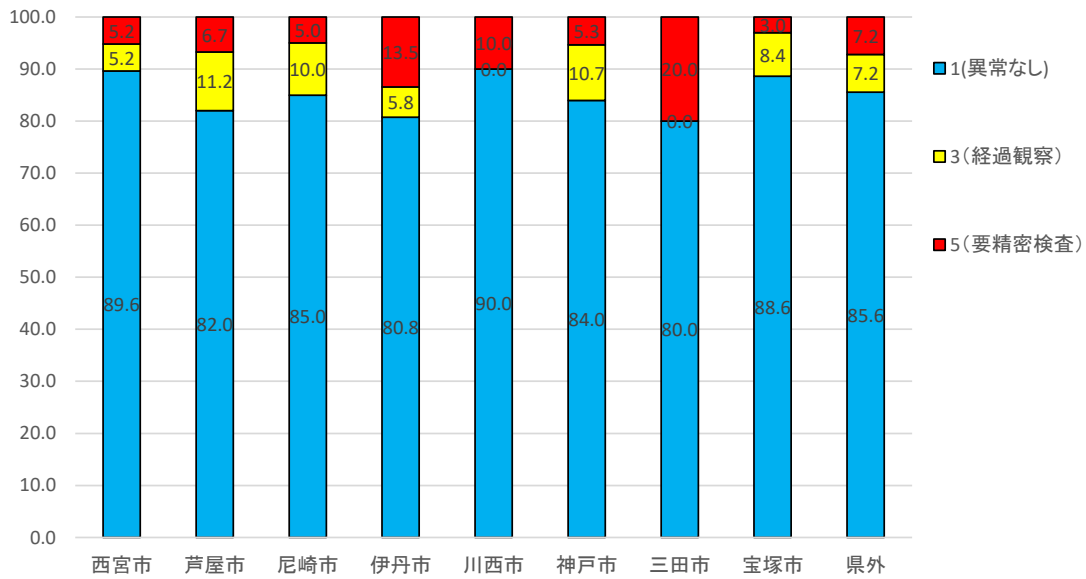
職域別総合判定比較表



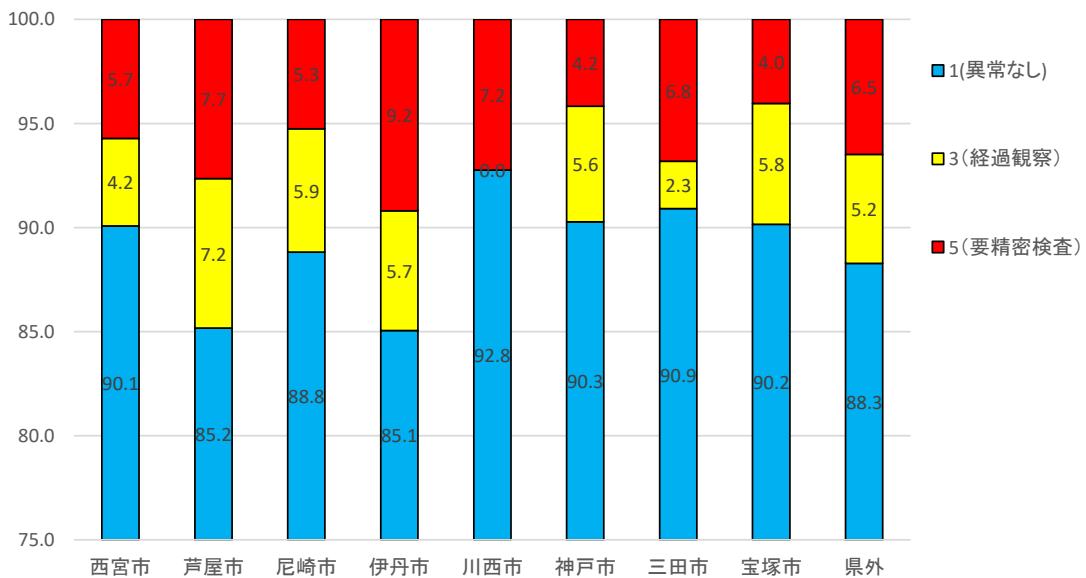
地域別便潜血反応判定比較表(男性)



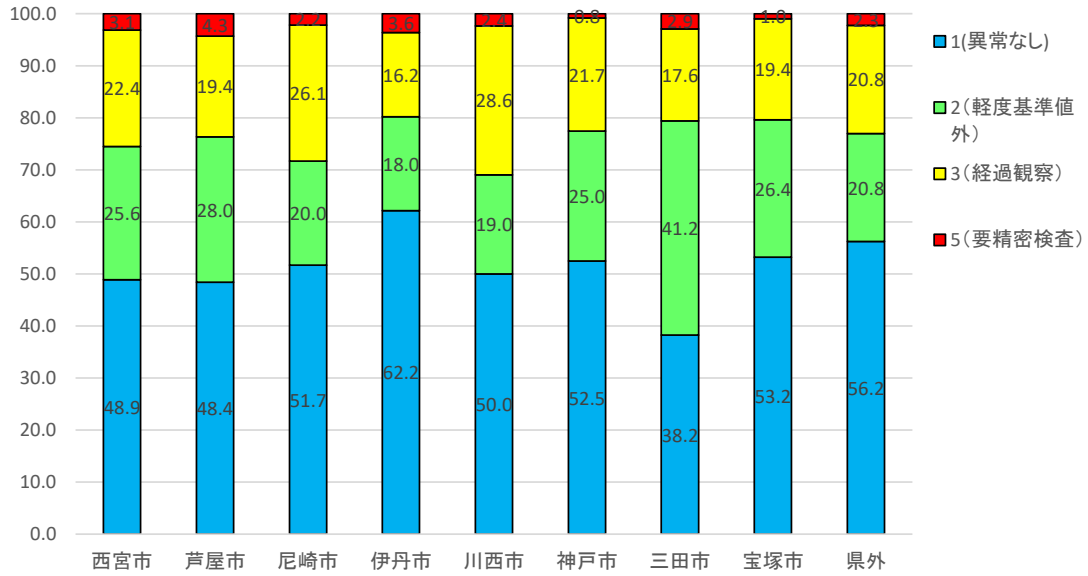
地域別便潜血反応判定比較表(女性)



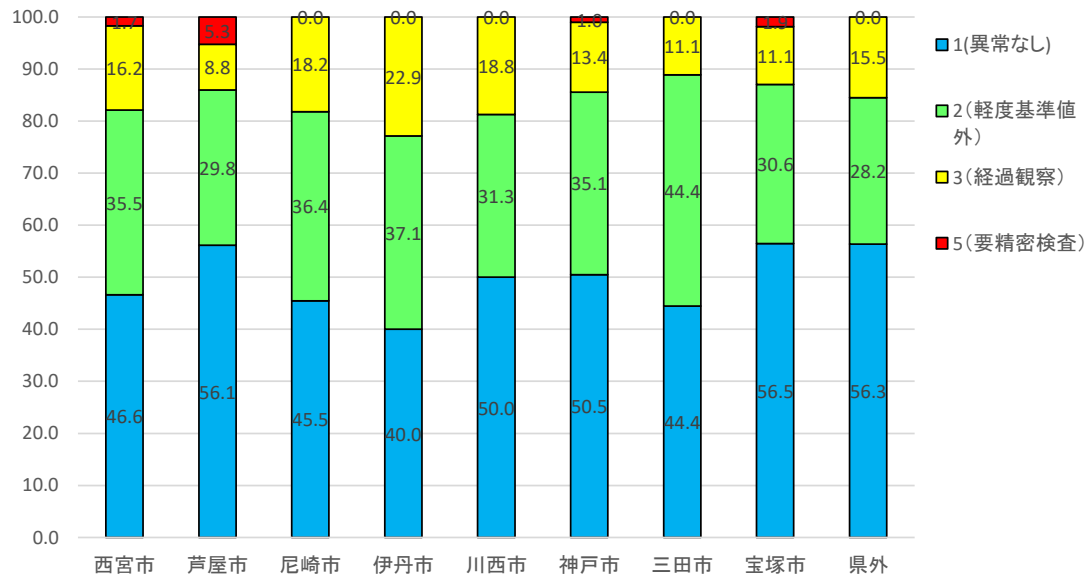
地域別便潜血反応判定比較表(全体)



地域別胃部X線判定比較表(男性)



地域別胃部X線判定比較表(女性)



地域別胃部X線判定比較表(全体)

